

# **PUERTO SHERRY RACE START RACE 2 START INFORMATION AND SPECTATOR CRAFT GUIDANCE**

## **CLIPPER RACE FLEET DEPARTURE INFORMATION FROM PUERTO SHERRY**

**FRIDAY 15 SEPTEMBER 2023**

### **SUMMARY**

The Clipper Race fleet will depart Puerto Sherry on Friday, 15 September 2023 and Clipper Race 2 Start will be off the entrance to Puerto Sherry.

All times are local time (UTC +2 Hrs)

All communications for the Clipper Race fleet will be on VHF CH 72  
The backup channel for the Clipper Race fleet will be VHF CH 77

High Water (HW) Cádiz 15 September 2023 – 1725 Local Time 3.30m

### **NARRATIVE PLAN**

The first of the 11 Clipper Race yachts will slip its lines from the Puerto Sherry at 1200. The Clipper Race Fleet will slip at intervals of 3 minutes. The final yacht will slip its lines at 1230 and be clear of the berths and marina by 1235. As soon as each yacht departs the marina, they will proceed to rendezvous in an area and hoist mainsails (weather permitting) and prepare for the Parade of Sail.

### **PARADE OF SAIL**

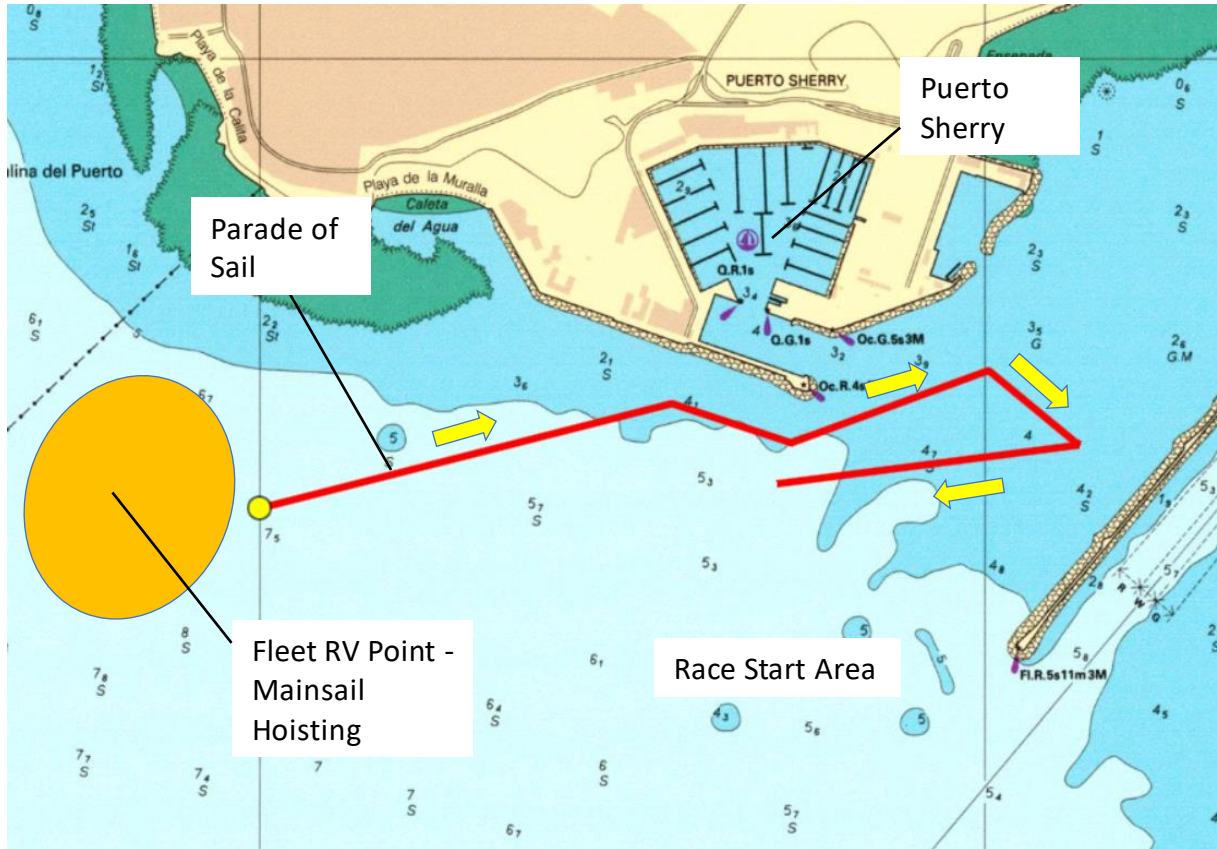
At 1300 the Clipper Race Fleet will begin the Parade of Sail. This will be a line astern formation towards Puerto Sherry along the outer breakwater. After Puerto Sherry Lighthouse the fleet will pass close by the entrance and will then turn 180 degrees to starboard and head back towards the lighthouse. Once clear, the fleet will continue towards the race start area.

Each yacht shall have a speed over the ground (SOG) of approx. 5 knots and a spacing of between 1 to 2 boat lengths from bow to stern. The total distance for the Parade of Sail will be approx. 1.3 nautical miles long and it is estimated that it will take a maximum of 15 minutes to complete.

## PARADE OF SAIL

Clipper 2023-24 Departure Day: Puerto Sherry, Friday 15 September 2023

**NOT TO BE USED FOR NAVIGATION**



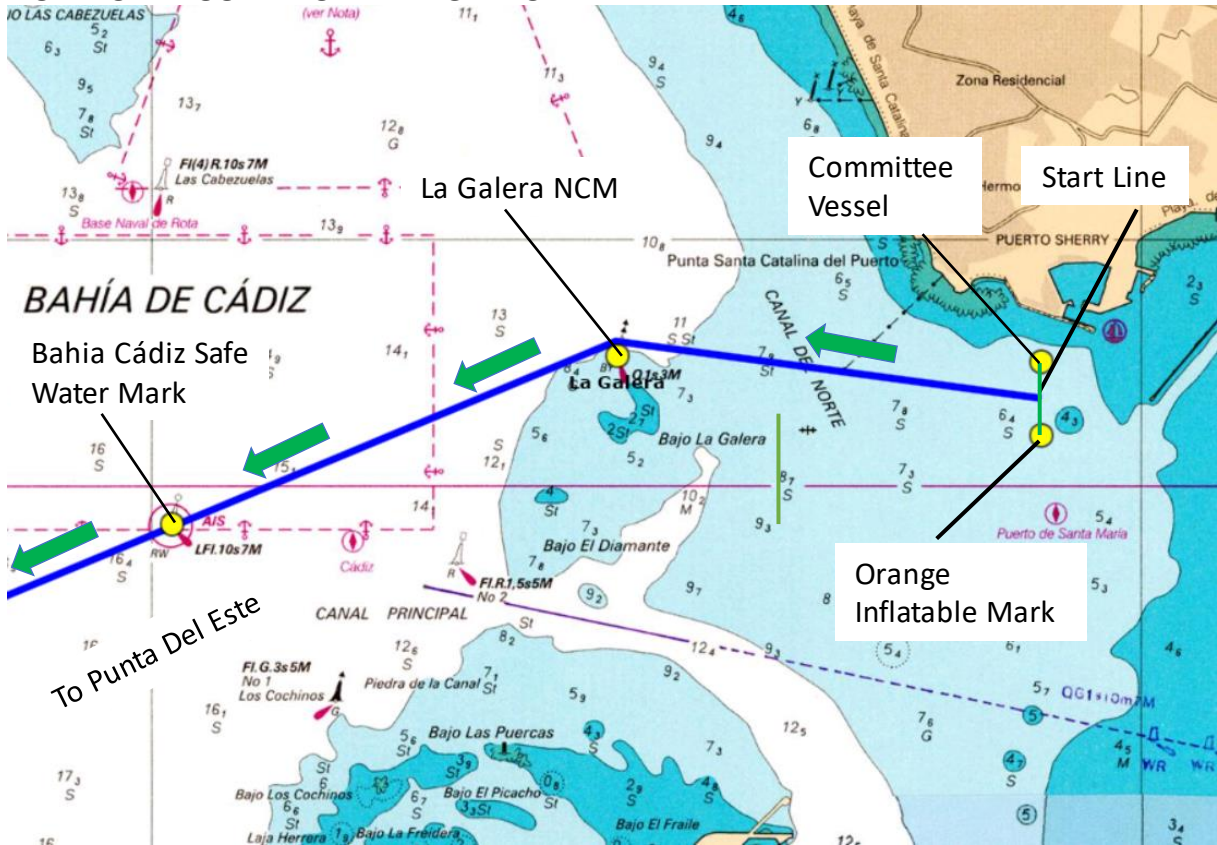
All timings local (UTC +2 Hr)

1100	Skippers dockside briefing
1200	1 <sup>st</sup> yacht leaves dock
1230	11 <sup>th</sup> yacht leaves dock
1300	Parade of Sail starts
1315	Parade of Sail finishes
1330 – 1430	MOB Practice Drills
1500	Race 2 Start

## RACE 2 START

Clipper 2023-24 Race Start: Puerto Sherry, Friday 15 September 2023

**NOT TO BE USED FOR NAVIGATION**



Race 2 Start off Puerto Sherry  
All timings local (UTC +2 Hrs)

1450	10 Minute warning
1456	4 Minute preparatory signal
1459	1 Minute warning
1500	Race 2 Start

## RACE 2 START

At 1500 racing will commence as per the course identified below :-

Ref	Mark	Rounding	Comments
1	START	East to West	See above
2	La Galera North Cardinal Mark	PORT	Approx. position 36°34.524N, 006°17.645W
3	Bahia De Cádiz Safe Water Mark	PORT	Approx. position 36°33.837N, 006°19.898W
4	Virtual Mark Finney	PORT	36°00.000N, 008°00.000W Virtual Waypoint
5	To Punta del Este	FINISH	As per Race 2 Course Instructions

### Abandonment Plan:

If for any reason (eg, adverse weather or shoreside security issue) the departure ceremony needs to be abandoned then the Clipper Race fleet shall proceed out of Puerto Sherry in a line astern formation. If an individual yacht has cause to abandon due to engine failure, collision, grounding, fire or crew injury then the rest of the fleet shall proceed as planned. The decision to abandon the event shall be made and communicated by the Clipper Race Director in consultation with Puerto Sherry officials.

### Overview

Event	Clipper 2023-24 Race 2 Start
Organising Authority	Clipper Ventures
Race Officer	Mark Light – Race Director
Primary Emergency Contact	Dale Smyth – Deputy Race Director
Operating area	Bay of Cádiz and approaches
VHF channels	72 (back up channel 77)
Callsign	'Clipper Race Control'
Supporting documents	Sailing Instructions, Course Instructions.
Date of event	Friday 15 September 2023
Operating period	1200 to 1600 approx.
Website	<a href="http://www.clipperroundtheworld.com">www.clipperroundtheworld.com</a>
Number of boats	11
Authorities to be informed	Puerto Sherry, Bahía Cádiz Port Control

## SPECTATOR CRAFT GUIDELINES

- All Clipper Race communications to the fleet will take place on VHF CH 72 – Please keep this channel clear between 1200 and 1600 on Race start day.
- The backup channel for the Clipper Race fleet is VHF CH 77 – Please keep this channel clear between 1200 and 1600 on Race start day.
- Any communications from Clipper Race Control to spectator craft will take place on VHF CH 72 – Please monitor this channel at all times.
- There will be a Moving Prohibited Zone of 250m around all Clipper Race yachts.
- All spectator craft must keep at least 250m clear of the Clipper Race fleet at all times.
- All spectator craft must be clear of the Parade of Sail area by 1230 and clear of the Race start course area by 1430 and must remain clear until the Clipper Race fleet have cleared the final turning mark and are heading outbound.
- Any spectator craft wishing to follow the Clipper Race Fleet must stay behind the last Clipper Race yacht and must not pass ahead of any Clipper Race yacht.
- All commercial shipping movements may be broadcast by Bahia Cádiz Port Control on VHF CH 71.
- Please note that the arrangements may change on the day and this will be communicated to all spectator craft on VHF CH 72.